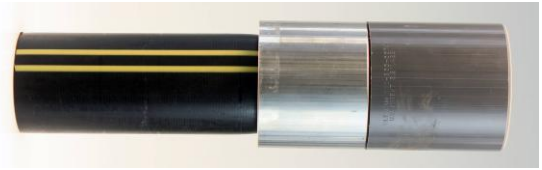




1101 McKinley Street
Anoka, MN 55303
Phone (763) 786-6682
Fax (763) 786-2167
www.polycam.com



Part Name: Gas Transition for PVC/HDPE-MDPE
Part Number: 816-xxxx

Gas Transition for PVC/HDPE-MDPE

General: The transition fitting is constructed out of PVC material, stainless steel support rings, and medium-density polyethylene (MDPE) PE2406 *or* high-density polyethylene (HDPE) PE3408/4710 pipe. The PVC and HDPE/MDPE materials are joined together by hydraulically pressing the HDPE/MDPE pipe into the PVC coupling. The PVC coupling portion of the transition fitting is machined with our multi-level barb system that provides a leak-free radial compressed joint. The HDPE/MDPE portion of the transition fitting is cut to a specific length and is pressed into the PVC coupling. Two stainless steel rings are installed to lock the PVC coupling and HDPE/MDPE pipe together thus forming a leak-proof joint.

System Performance

The transition fitting is designed to handle the pressure rating of the HDPE/MDPE pipe with a 2:1 safety factor at 73.40 degrees Fahrenheit with a minimum 50-year design life.

Quality Assurance

The transition fitting shall be manufactured by Poly-Cam, Inc. Poly-Cam, Inc. shall provide quality assurance with regards to proper installation, compatibility, performance, and acceptance. The transition joint meets or exceeds the requirements of:

- ASTM D2513 Category 1
- Meets ASTM F2897
- Meets ASTM D3261

Installation

HDPE/MDPE pipe end: Install transition fitting to comply with the pipe manufacturer's recommended procedures. All field welds shall be completed per Plastic Pipe Institute's welding procedure for butt fusion.

PVC coupling: Install the PVC coupling so as to comply with the PVC pipe manufacturer's recommended procedures for solvent cement.

Material

PVC coupling: The PVC coupling is manufactured out of PVC round bar and PVC hollow bar. This material is a rigid, unfilled, general-purpose-grade Polyvinyl Chloride (PVC) compound with a cell classification of 12454, per ASTM D1784. (Callout designation S-PVC0111 per ASTM D6263).

High-Density Polyethylene (HDPE) or Medium-Density Polyethylene Pipe (MDPE):

- Incorporated with the fitting is:
 - MDPE - PE2406/2708 (PE234373E and PE234375E)
 - HDPE - PE3408/3608(cell class 345464C)/PE4710 (PE445574C)
- All pipe meets ASTM D3035 and ASTM D2513.

Stainless Steel outside ring and insert: The outside ring and insert are manufactured out of 304 stainless steel tubing (ASTM A249 or ASTM A269) and/or ERW pipe (ASTM SA-312).

Warranty

The warranty period is one year after the date of substantial completion of installation.

Series 816 Gas Transition for PVC/HDPE-MDPE

Nominal Size (In.)	Poly-Cam Female Glue Fitting Material	Coupling Diameter A	Coupling Length B	HDPE Length C	HDPE Diameter D
0.75	PVC	1.53	2.5	22.75	1.050
1	PVC	2	3	22.255	1.315
1.25	PVC	2.375	4.5	21.815	1.660
1.5	PVC	2.38	4.5	21.815	1.900
2	PVC	3.025	5.75	21.375	2.375
2.5	PVC	3.535	5.75	21.41	2.875
3	PVC	4.3	6.5	20.59	3.500
4	PVC	5.56	6.5	20.625	4.500
6	PVC	8.625	12.75	17.947	6.625

