



# Series 415

## Side Fusion Tapping Saddle

**Available In:**

**Aluminum Bronze**

**304 Stainless Steel**

**316 Stainless Steel**

**Standard Size SDR 5**

**Base size available 1.5", 2", 3" or 4"**

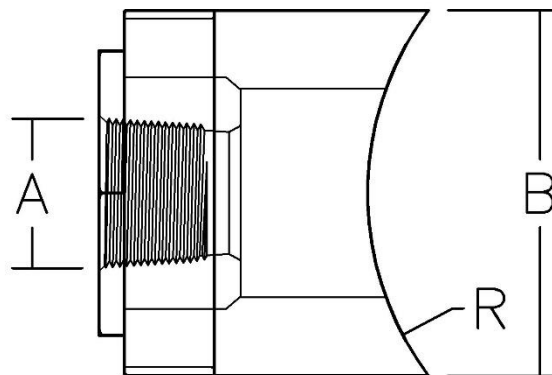
**Stainless Compression Ring**

**304/316 Stainless Steel**

**Fully Pressure Rated**



Nominal Size	Inch Diameter A	PE Pipe O.D. B	Radius Cut R
0.5 NPT	0.84	4.500	5.563 to 63
0.75 NPT	1.05	4.500	5.563 to 63
0.75 CC	1.145	4.500	5.563 to 63
1 NPT	1.315	4.500	5.563 to 63
1 CC	1.36	4.500	5.563 to 63
1.25 NPT	1.66	4.500	5.563 to 63
1.25 CC	1.717	4.500	5.563 to 63
1.5 NPT	1.9	4.500	5.563 to 63
1.5 CC	2.004	4.500	5.563 to 63
2 NPT	2.375	4.500	5.563 to 63
2 CC	2.58	4.500	5.563 to 63



Certified to  
NSF/ANSI/CAN 61