



1101 McKinley Street
Anoka, MN 55303
Phone (763) 786-6682
Fax (763) 786-2167
www.polycam.com



Part Name: Female Flare Swivel Transition

Part Number: 914-xxxx

Product Specifications:

- Fully pressure rated to pipe SDR installed (200PSI, 250PSI)
- ASTM 1598 and ASTM 1599
- Material complies with California AB1953, SB1334 and SB1935.
- Requires a copper gasket.
- Meets NSF 61, listing PM13572
- Can be made with CTS pipe. Call for details.

High-Density Polyethylene: HDPE pipe

- Meets ASTM D-3350 with minimum cell classification values of PE445574C (PE 4710)
- Meets ASTM F714.
- Density shall be no less than 0.955 g/cm as referenced in ASTM D1505
- Melt index no greater than 0.15 g/10 minutes when tested per ASTM D 1238
- Tensile Strength at Yield -tensile shall be 3,200 psi to less than 3,500 psi as referenced in ASTM D638
- ESCR-Environmental Stress Crack Resistance shall be over 5,000 hours with zero failures when tested per ASTM D 1693-Condition C
- All pipe meets ASTM 3035.
- All certifications will be submitted upon request.

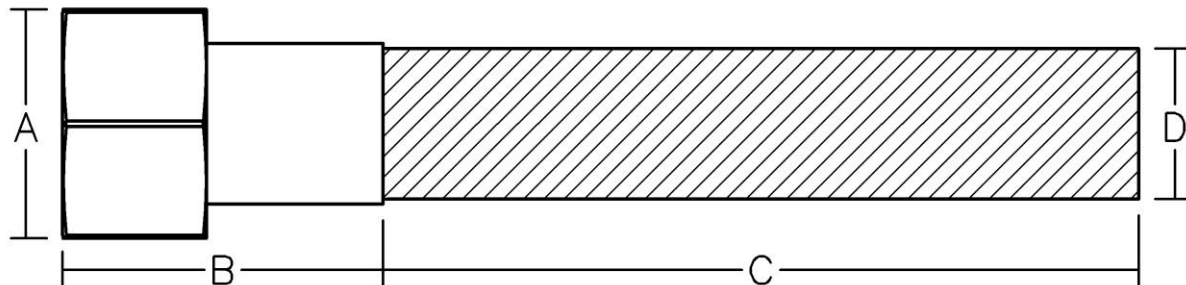


Certified to
NSF/ANSI/CAN 61

Revision Date: 2-10-2024

Series 914 Female Flare Swivel Transition

Flare Size	Poly-Cam Male Flare Material	Coupling Hex Diameter A	Coupling Length B	HDPE Length C	HDPE Diameter Size D
0.75	C954	1.5	1.98	4	1.050
1	C954	1.75	2.77	4	1.315
1.25	C954	2.25	2.33	5	1.660
1.5	C954	2.75	3.30	5	1.900
2	C954	3.5	3.20	5	2.375



Certified to
NSF/ANSI/CAN 61

Revision Date: 2-10-2024