



1101 McKinley Street
Anoka, MN 55303
Phone (763) 786-6682
Fax (763) 786-2167
www.polycam.com



Part Name: Male Thread CTS HDPE Transition Fitting
Part Number: 709-xxxx

Threaded Transitions

The POLY-CAM Threaded Transition is a multi-level mechanical transition fitting. The polyethylene or pipe-quality copolymer material are hydraulically compressed into the transition fitting.

Design

Relaxation of the pipe creates a seal to prevent leakage. Under pressure, the internal pressure within the pipe increases the sealing surface area on the barb. Under zero internal pressure, the compression and tensional strain created by the compression of the multi-level barbs are greater than the stress created by relaxation and/or thermal expansion and contraction. As the internal pressure increases, the connection between the pipe material and transition fitting increases.

- Sizes range from .5 to 2" NPT.
- All National Pipe Threads are made to ANSI/ ASME B1.20.1 - 2013.

System Performance

The transition fitting is designed to handle the pressure rating of the CTS HDPE pipe with a 2:1 safety factor at 73.40 degrees Fahrenheit with a minimum 50-year design life.

Quality Assurance

The transition fitting shall be manufactured by Poly-Cam, Inc. Poly-Cam, Inc. shall provide quality assurance with regards to proper installation, compatibility, performance, and acceptance. The transition joint meets or exceeds the requirements of:

- ASTM 1598 and ASTM 1599
- All Fittings meet ARRA requirements.
- Meets NSF 61, listing PM13570

Installation

HDPE pipe end: Install transition fitting to comply with the pipe manufacturer's recommended procedures. All field welds shall be completed per Plastic Pipe Institute's welding procedure for butt fusion.

Threaded Fitting: When installing the transition fitting:

- Always use pipe joint sealant or Teflon tape.
- Always use strap wrenches.
- **Do not use a pipe wrench.**
- **Always use 2 wrenches when connecting.**
- **Over tightening may cause ovality or damage.**
- **Always pressure test for leaks before backfilling.**
- Backfill and compact carefully around transition and service line to prevent ground shifts which could damage the valve and/or transition fitting.

Material

Threaded Fitting:

- Manufactured of Carbon Steel (A53 or A106 grade), Type 304 or Type 316 Stainless Steel (ASTM A249 or ASTM A269), or ERW pipe (ASTM SA-312).
- For carbon steel, the **epoxy coating** (IF 194T Red Iron Oxide) is fusion bonded to the metal. Meets NSF 61, FDA 175.300, AWWA C116-01, C213-01, UL 262 and FM 1120/1130. Complies with AWWA and NSF 61 material requirements.

High-Density Polyethylene: HDPE pipe

- All pipe meets ASTM 3035 and ASTM 714.
- Manufactured of HDPE (cell class 345454c) or pipe quality Copolymer material. (PE3408, PE3608 and PE4710).
- It complies with AWWA C-901, C906 and NSF 61.
- All certification will be submitted upon request.

Warranty

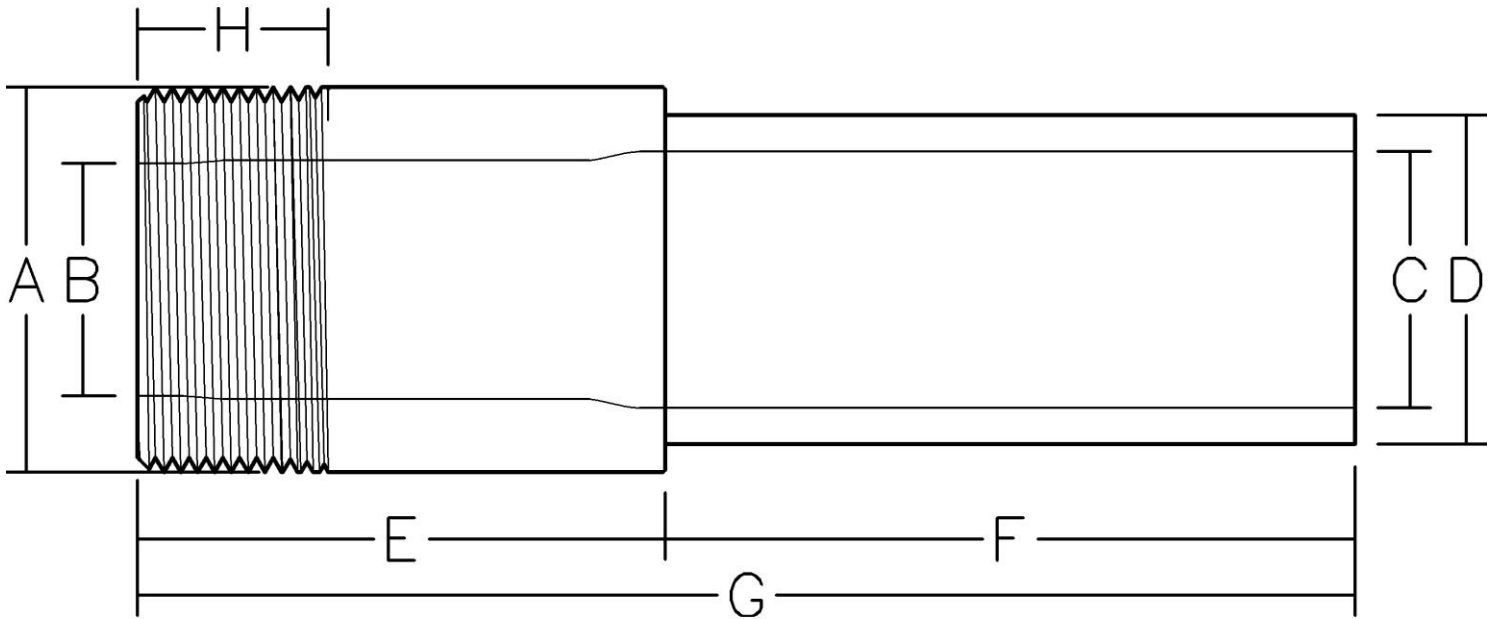
The warranty period is one year after the date of substantial completion of installation.



Series 709 Transition with Male CTS

SDR 9

Nominal Size (In.)	Coupling O.D. A	Pressed SDR9 PE Pipe I.D. B	Exposed SDR9 PE Pipe I.D. C	Exposed PE Pipe O.D. D	Coupling Length E	Exposed PE Pipe Length F	Overall Length G	Thread Length H
0.5	0.990	~0.42	0.487	0.625	1.8	7.2	9	0.78
0.75	1.240	~0.60	0.681	0.875	1.9	7.05	8.95	0.8
1	1.315	~0.83	0.875	1.125	2	6	8	0.98
1.25	1.660	~0.99	1.069	1.375	2.6	5.4	8	1.01
1.5	1.900	~1.15	1.263	1.625	2.65	5.35	8	1.03
2	2.375	~1.56	1.653	2.125	3	5	8	1.06



Certified to
NSF/ANSI/CAN 61