



# Series 914

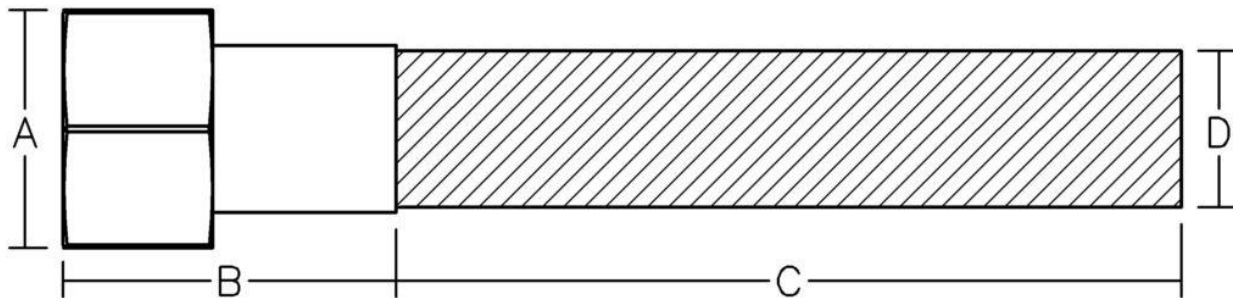
## Female Flare Swivel Transition

**Available In:**

**Aluminum Bronze**  
**Standard SDR Sizes 7, 9, 11, 17**  
**Domestic**  
**Fully Pressure Rated**



Flare Size	Poly-Cam Male Flare Material	Coupling Hex Diameter A	Coupling Length B	HDPE Length C	HDPE Diameter Size D
0.75	C954	1.5	1.98	4	1.050
1	C954	1.75	2.77	4	1.315
1.25	C954	2.25	2.33	5	1.660
1.5	C954	2.75	3.30	5	1.900
2	C954	3.5	3.20	5	2.375



Certified to  
 NSF/ANSI/CAN 61