

Weld-on Transition for Gas and Water

Available In:

- Carbon Steel Epoxy-Coated
- 304 Stainless Steel
- 316 Stainless Steel

Standard SDR Sizes 7, 9, 11, 17

Import or Domestic

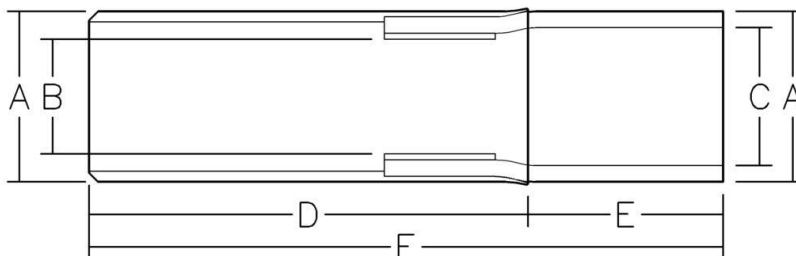
Meets NSF 61, listing PM20928

Meets ASTM D2513, Category 1

Fully Pressure Rated



Nominal Size (In.)	HDPE/Steel Pipe O.D. A	Pressed SDR11 PE Pipe I.D. B	Exposed SDR11 PE Pipe I.D. C	Exposed PE Pipe O.D. A	Coupling Length D	Exposed PE Pipe Length E	Overall Length F
0.75	1.05	~0.79	0.85	1.05	11	~6.36	~17.36
1	1.315	~0.97	1.06	1.315	12	~6.21	~18.21
1.25	1.66	~1.23	1.34	1.66	10	~6.15	~16.15
1.5	1.9	~1.39	1.533	1.9	10	~6.09	~16.09
2	2.375	~1.74	1.917	2.375	10	~5.64	~15.64
3	3.5	~2.60	2.826	3.5	12	~6.53	~18.53
4	4.5	~3.41	3.633	4.5	13	8.5	21.5
5	5.563	~4.2	4.49	5.563	17	12	29
6	6.625	~5.0	5.349	6.625	17	11	28
8	8.625	~6.5	6.963	8.625	20	12	32
10	10.75	~8.2	8.679	10.75	26	16	42
12	12.75	~9.8	10.293	12.75	28	20.5	48.5
14	14	~10.8	11.301	14	28	20	48
16	16	~12.4	12.915	16	28	22	50
18	18	~13.9	14.532	18	28	21.75	49.75
20	20	~15.4	16.146	20	28	25.75	53.75
24	24	~18.5	19.374	24	28	29.75	54.75
30	30	~23.5	24.219	30	28	28	56



Certified to
NSF/ANSI/CAN 61

1101 McKinley Street – Anoka, MN 55303 (763) 786-6682
Fax: (763) 786-2167 www.poly-cam.com

Revision Date: 2-18-2023