



# Series 709

## Transition with Male CTS

**Available In:**

**Carbon Steel Epoxy-Coated**

**304 Stainless Steel**

**316 Stainless Steel**

**Aluminum Bronze**

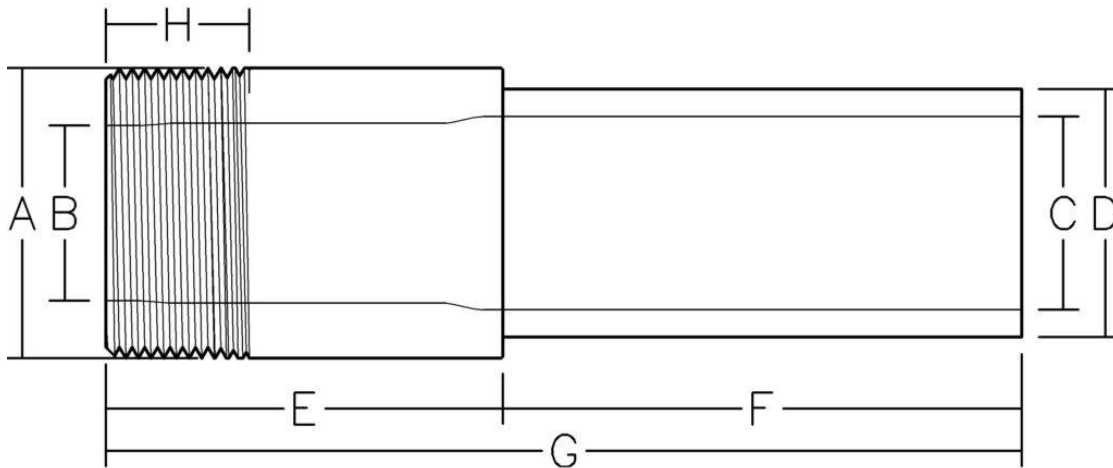
**Standard SDR Sizes 7, 9, 11, 17**

**Import or Domestic**

**Fully Pressure Rated**



Nominal Size (In.)	Coupling O.D. A	Pressed SDR9 PE Pipe I.D. B	Exposed SDR9 PE Pipe I.D. C	Exposed PE Pipe O.D. D	Coupling Length E	Exposed PE Pipe Length F	Overall Length G	Thread Length H
0.5	0.990	~0.42	0.487	0.625	1.8	7.2	9	0.78
0.75	1.240	~0.60	0.681	0.875	1.9	7.05	8.95	0.8
1	1.315	~0.83	0.875	1.125	2	6	8	0.98
1.25	1.660	~0.99	1.069	1.375	2.6	5.4	8	1.01
1.5	1.900	~1.15	1.263	1.625	2.65	5.35	8	1.03
2	2.375	~1.56	1.653	2.125	3	5	8	1.06



Certified to NSF/ANSI/CAN 61

1101 McKinley Street – Anoka, MN 55303 (763) 786-6682  
 Fax: (763) 786-2167 www.poly-cam.com

Revision Date: 2-18-2023