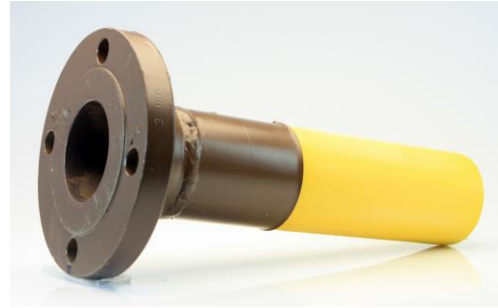




1101 McKinley Street  
Anoka, MN 55303  
Phone (763) 786-6682  
Fax (763) 786-2167  
www.polycam.com



Part Name: Flanged Transition for Gas  
Part Number: 817-xxxx

## **Flanged Transition for Gas**

The flanged transition for gas is a multi-level mechanical transition fitting. The polyethylene or pipe-quality copolymer material are hydraulically compressed into the transition fitting.

### **Design**

Relaxation of the pipe creates a seal to prevent leakage. Under pressure, the internal pressure within the pipe increases the sealing surface area on the barb. Under zero internal pressure, the compression and tensional strain created by the compression of the multi-level barbs are greater than the stress created by relaxation and/or thermal expansion and contraction. As the internal pressure increases, the connection between the pipe material and transition fitting increases.

- Sizes range from 1" to 24" Iron Pipe Size
- Rated for both water and gas use
- Flange dimensions to ANSI B16.5. Available in standard pound rating: 150, 300, and 600.

### **System Performance**

The transition fitting is designed to handle the pressure rating of the HDPE pipe with a 2:1 safety factor at 73.40 degrees Fahrenheit with a minimum 50-year design life.

### **Quality Assurance**

The transition fitting shall be manufactured by Poly-Cam, Inc. Poly-Cam, Inc. shall provide quality assurance with regards to proper installation, compatibility, performance, and acceptance. The transition joint meets or exceeds the requirements of:

- ASTM D2513 Category 1.

## **Installation**

**HDPE pipe end:** Install transition fitting to comply with the pipe manufacturer's recommended procedures. All field welds shall be completed per Plastic Pipe Institute's welding procedure for butt fusion.

**Steel Fitting:** The entrance of the coupling is tapered at the beginning. The polyethylene or copolymer material is cold pressed into the coupling. This allows the material to relax into the multi-level barb system.

## **Material**

### **Flanged Fitting:**

- Manufactured of carbon steel (A53 or A106 grade), Type 304, Type 316 (ASTM A249 or ASTM A269) and/or ERW pipe (ASTM SA-312)
- For carbon steel, the **epoxy coating** (IF 194T Red Iron Oxide) is fusion bonded to the metal. Meets NSF 61, FDA 175.300, AWWA C116-01,C213-01, UL 262 and FM 1120/1130

### **High-Density Polyethylene:** HDPE pipe

- Incorporated with MDPE PE2406/2708 (PE234373E and PE234375E), PE 3408/3608(cell class 345464c), PE4710 (PE445574C) or pipe quality Copolymer material.
- All pipe meets ASTM 3035 and ASTM 2513.
- All certification will be submitted upon request.

**Stainless Steel insert:** The insert is manufactured out of 304 stainless steel tubing (ASTM A249 or ASTM A269) and/or ERW pipe (ASTM SA-312).

## **Warranty**

The warranty period is one year after the date of substantial completion of installation.

# Series 817 Flanged Transition for Gas

Nominal Size (In.)	Flange Diameter <b>A</b>	Coupling Length <b>B</b>	HDPE Length <b>C</b>	HDPE Diameter <b>D</b>	Bolt Holes: Number, Diameter
1	4.88	4.44	22	1.315	4-0.75
1.25	5.25	5.16	21.4	1.660	4-0.75
1.5	6.12	5.29	21.4	1.900	4-0.88
2	6.5	5.75	21	2.375	8-0.75
3	8.25	7.12	20	3.500	8-0.88
4	10	7.38	20	4.500	8-0.88
5	11	8.88	19	5.563	8-0.88
6	12.5	8.88	19	6.625	12-0.88
8	15	11.38	17	8.625	12-1.00
10	17.5	12.62	16	10.750	16-1.12
12	20.5	14.12	15	12.750	16-1.25
14	23	14.62	15	14	20-1.25
16	25.5	15.75	14	16	20-1.38
18	28	20.25	10	18	24-1.38
20	30.5	22.38	8	20	24-1.38
24	36	24.62	6	24	24-1.62

*Available in #150, #300 and #600*

