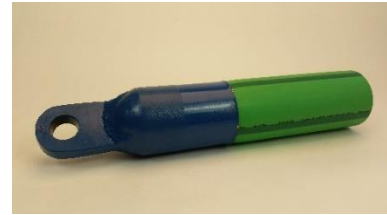


Aquatherm® Pulling Head

Round nose design for ease of pulling
Strong steel construction for longevity
Pressure-sealed design



Nominal Size (In.)	Poly-Cam Pulling Head Material	Pulling Head Diameter (in) A	Pulling Head Length (in) B	Aquatherm Length (in) C	Aquatherm Diameter (mm) D	Eye Diameter E	Safe Workload (lbs.)*	Estimated Shipping Weight
0.75	Carbon Steel	1.24	4	8	25	0.44		1
1	Carbon Steel	1.5	4	8	32	0.45		1
1.25	Carbon Steel	1.75	4	8	40	0.51		2
1.5	Carbon Steel	2	4	8	50	0.5		3
2	Carbon Steel	2.49	4	12	63	0.81		3
2.5	Carbon Steel	2.875	4	12	75	1.5		7
3	Carbon Steel	3.5	6	12	90	1.25		10
4	Carbon Steel	4.5	7	14	125	1.5	6,930	15
6	Carbon Steel	6.625	10	16	160	2	11,353	45
8	Carbon Steel	8.66	11	18	200	2	17,739	70
10	Carbon Steel	10.75	13	22	250	2	27,718	110
12	Carbon Steel	12.75	15	24	315	2	44,005	200
14	Carbon Steel	14	20.5	24	355	2	55,890	250
16	Carbon Steel	16	21	26	400	2	70,958	350
18	Carbon Steel	18	27	28	450	2	89,806	500
20	Carbon Steel	20	30	30	500	2	110,871	750
22	Carbon Steel	22	24.5	32	560	2	139,077	850
24	Carbon Steel	24	38.5	36	630	2	176,019	1000

