



1101 McKinley Street  
Anoka, MN 55303  
Phone (763) 786-6682  
Fax (763) 786-2167  
www.polycam.com



Part Name: The Standard Reducing Transition

Part Number: 500-xxxx

### **Reducing Threaded Transitions**

The Poly-Cam Reducing Threaded Transition is a multi-level mechanical transition fitting. The transition fitting is hydraulically compressed onto molded polyethylene or machined quality copolymer material.

### **Design**

Relaxation of the pipe creates a seal to prevent leakage. Under pressure, the internal pressure within the pipe increases the sealing surface area on the barb. Under zero internal pressure, the compression and tensional strain created by the compression of the multi-level barbs are greater than the stress created by relaxation and/or thermal expansion and contraction. As the internal pressure increases, the connection between the pipe material and transition fitting increases.

- Sizes range from .5 to 4" NPT.
- All National Pipe Threads are made to ANSI/ASME B1.20.1 - 2013.

### **System Performance**

The transition fitting is designed to handle the pressure rating of the HDPE pipe with a 2:1 safety factor at 73.40 degrees Fahrenheit with a minimum 50-year design life.

### **Quality Assurance**

The transition fitting shall be manufactured by Poly-Cam, Inc. Poly-Cam, Inc. shall provide quality assurance with regards to proper installation, compatibility, performance, and acceptance. The transition joint meets or exceeds the requirements of:

- ASTM 1598 and ASTM 1599
- All fittings meet ARRA requirements.

## Installation

**HDPE Reducer:** Install transition fitting to comply with the molded fittings (ASTM D-3261) manufacturer's recommended procedures. All field welds shall be accomplished per Plastic Pipe Institute's welding procedure for butt fusion.

**Threaded Fitting:** When installing the transition fitting:

- Always use pipe joint sealant or Teflon tape.
- Always use strap wrenches.
- **Do not use a pipe wrench.**
- **Always use 2 wrenches when connecting.**
- **Over tightening may cause ovality or damage.**
- **Always pressure test for leaks before backfilling.**
- Backfill and compact carefully around transition and service line to prevent ground shifts which could damage the valve and/or transition fitting.

## Material

**Threaded Fitting:**

- Manufactured of Carbon Steel (A53 or A106 grade), Type 304 or Type 316 Stainless Steel (ASTM A249 or ASTM A269), ERW pipe (ASTM SA-312), or C954 grade Aluminum Bronze (lead-free material).
- For carbon steel, the **epoxy coating** (IF 194T Red Iron Oxide) is fusion bonded to the metal. Meets NSF 61, FDA 175.300, AWWA C116-01,C213-01, UL 262 and FM 1120/1130

**High-Density Polyethylene:** HDPE pipe

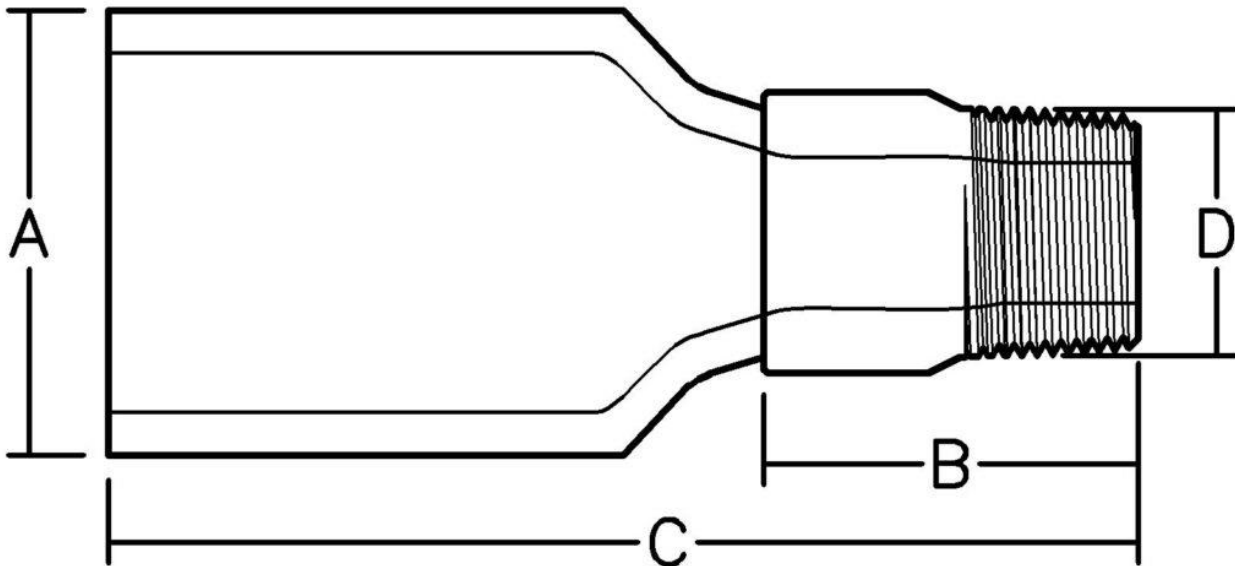
- Meets ASTM D-3350 with minimum cell classification values of 345464C (PE 3408), PE445574C (PE 4710)
- Meets ASTM F714.
- Density shall be no less than 0.955 g/cm as referenced in ASTM D1505
- Melt index no greater than 0.15 g/10 minutes when tested per ASTM D 1238
- Tensile Strength at Yield -tensile shall be 3,200 psi to less than 3,500 psi as referenced in ASTM D638
- ESCR-Environmental Stress Crack Resistance shall be over 5,000 hours with zero failures when tested per ASTM D 1693-Condition C
- All pipe meets ASTM 3035.
- All certifications will be submitted upon request.

## Warranty

The warranty period is one year after the date of substantial completion of installation.

# Series 500 The Standard Reducing Transition

Nominal Size (In.)	Poly-Cam Thread Material	HDPE Reducer Diameter <b>A</b>	Coupling Length <b>B</b>	Overall Length <b>C</b>	Coupling Diameter <b>D</b>
1 x .5	Carbon Steel, C954 Bronze, Stainless 316, Stainless 304	1.315	1.8	4.72	0.99
1 x .75	Carbon Steel, C954 Bronze, Stainless 316, Stainless 304	1.315	1.9	4.74	1.24
1.25 x 1	Carbon Steel, C954 Bronze, Stainless 316, Stainless 304	1.66	2	4.78	1.315
1.25 x .75	Carbon Steel, C954 Bronze, Stainless 316, Stainless 304	1.66	1.9	6.38	1.24
1.5 x 1	Carbon Steel, C954 Bronze, Stainless 316, Stainless 304	1.9	2	6.38	1.315
1.5 x 1.25	Carbon Steel, C954 Bronze, Stainless 316, Stainless 304	1.9	2.6	6.38	1.66
2 x 1	Carbon Steel, C954 Bronze, Stainless 316, Stainless 304	2.375	2	7.15	1.315
2 x 1.25	Carbon Steel, C954 Bronze, Stainless 316, Stainless 304	2.375	2.6	6.88	1.66
2 x 1.5	Carbon Steel, C954 Bronze, Stainless 316, Stainless 304	2.375	2.65	6.25	1.9
3 x 2	Carbon Steel, C954 Bronze, Stainless 316, Stainless 304	3.5	3	6.88	2.375
3 x 2.5	Carbon Steel, C954 Bronze, Stainless 316, Stainless 304	3.5	3.75	6.88	2.875
4 x 2	Carbon Steel, C954 Bronze, Stainless 316, Stainless 304	4.5	3	7.38	2.375
4 x 3	Carbon Steel, C954 Bronze, Stainless 316, Stainless 304	4.5	4	6.88	3.5
6 x 4	Carbon Steel, C954 Bronze, Stainless 316, Stainless 304	6.625	4.5	11.5	4.5



Fully pressure rated • Standard SDR sizes 7,9,11,17 • ANSI/ASME B1.20.1 - 2013  
 Manufactured to ASTM D3261, D3350, D3035