



1101 McKinley Street
Anoka, MN 55303
Phone (763) 786-6682
Fax (763) 786-2167
www.polycam.com



Part Name: Side Fusion Tapping Saddle
Part Number: 415-xxxx

Fitting Description

The Side Fusion Tapping Saddle provides a cost-effective, dependable fitting for the water and industrial markets. The tapping saddle can be installed with standard side fusion equipment.

- Meets ASTM D1598, D1599, D1588, and AWWA C906
- Branch outlet sizes .5"-2" NPT or CC thread (AWWA thread)
- Main size 2"-64" diameters
- Base size available 1.5", 2", 3" or 4" pivot head
- Full Pressure Rated 335 PSI
- HDPE Branch Saddle PE 4710 ASTM D3350 (Black) Cell Classification PE445574C
- Female Threaded Insert C954 Bronze AWWA C 800
- Stainless Compression Ring uses grade type 304 or 316
- Meets NSF 61, listing PM13569

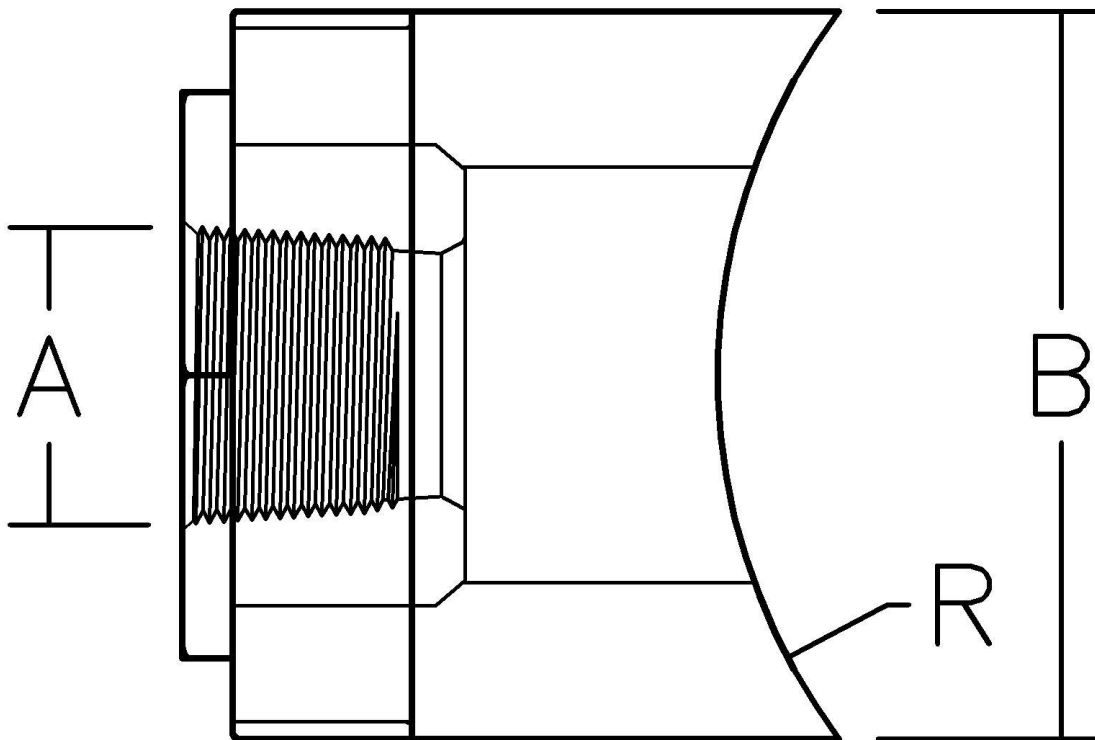


Certified to
NSF/ANSI 61

Series 415 Side Fusion Tapping Saddle

4 Base

Nominal Size	Inch Diameter A	PE Pipe O.D. B	Radius Cut R
0.5 NPT	0.84	4.500	5.563 to 42
0.75 NPT	1.05	4.500	5.563 to 42
0.75 CC	1.145	4.500	5.563 to 42
1 NPT	1.315	4.500	5.563 to 42
1 CC	1.36	4.500	5.563 to 42
1.25 NPT	1.66	4.500	5.563 to 42
1.25 CC	1.717	4.500	5.563 to 42
1.5 NPT	1.9	4.500	5.563 to 42
1.5 CC	2.004	4.500	5.563 to 42
2 NPT	2.375	4.500	5.563 to 42
2 CC	2.58	4.500	5.563 to 42



Certified to
NSF/ANSI 61