



1101 McKinley Street  
Anoka, MN 55303  
Phone (763) 786-6682  
Fax (763) 786-2167  
www.polycam.com



Part Name: Side Fusion Tapping Saddle  
Part Number: 415-xxxx

### Fitting Description

The Side Fusion Tapping Saddle provides a cost-effective, dependable fitting for the water and industrial markets. The tapping saddle can be installed with standard side fusion equipment.

- Meets ASTM D1598, D1599, D1588, and AWWA C906
- Branch outlet sizes .5"-2" NPT or CC thread (AWWA thread)
- Main size 2"-64" diameters
- Base size available 1.5", 2", 3" or 4" pivot head
- Full Pressure Rated 335 PSI
- HDPE Branch Saddle PE 4710 ASTM D3350 (Black) Cell Classification PE445574C
- Female Threaded Insert C954 Bronze AWWA C 800
- Stainless Compression Ring uses grade type 304 or 316
- Meets NSF 61, listing PM13569

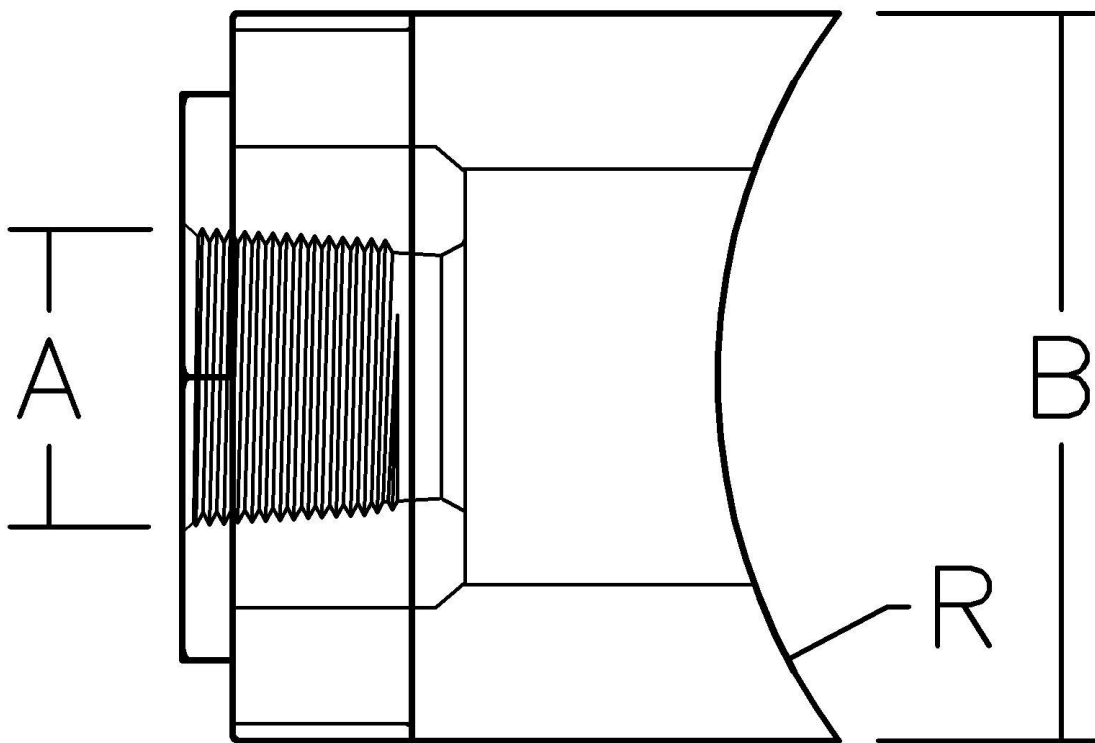


Certified to  
NSF/ANSI 61

# Series 415 Side Fusion Tapping Saddle

## 2 Base

| Nominal Size | Inch Diameter <b>A</b> | PE Pipe O.D. <b>B</b> | Radius Cut <b>R</b> |
|--------------|------------------------|-----------------------|---------------------|
| 0.5 NPT      | 0.84                   | 2.375                 | 3.5 to 42           |
| 0.75 NPT     | 1.05                   | 2.375                 | 3.5 to 42           |
| 0.75 CC      | 1.145                  | 2.375                 | 3.5 to 42           |
| 1 NPT        | 1.315                  | 2.375                 | 3.5 to 42           |
| 1 CC         | 1.36                   | 2.375                 | 3.5 to 42           |



Certified to  
NSF/ANSI 61

