



1101 McKinley Street  
Anoka, MN 55303  
Phone (763) 786-6682  
Fax (763) 786-2167  
www.polycam.com



Part Name: Side Fusion Tapping Saddle  
Part Number: 415-xxxx

### Fitting Description

The Side Fusion Tapping Saddle provides a cost-effective, dependable fitting for the water and industrial markets. The tapping saddle can be installed with standard side fusion equipment.

- Meets ASTM D1598, D1599, D1588, and AWWA C906
- Branch outlet sizes .5"-2" NPT or CC thread (AWWA thread)
- Main size 2"-64" diameters
- Base size available 1.5", 2", 3" or 4" pivot head
- Full Pressure Rated 335 PSI
- HDPE Branch Saddle PE 4710 ASTM D3350 (Black) Cell Classification PE445574C
- Female Threaded Insert C954 Bronze AWWA C 800
- Stainless Compression Ring uses grade type 304 or 316
- Meets NSF 61, listing PM13569

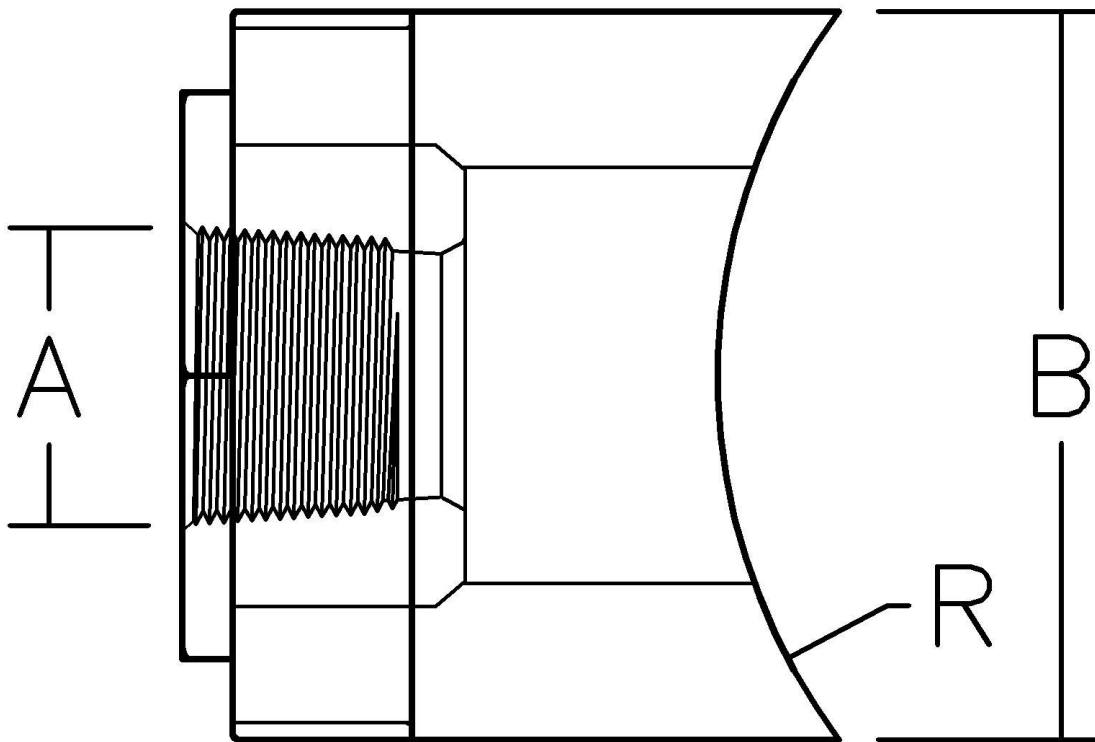


Certified to  
NSF/ANSI 61

# Series 415 Side Fusion Tapping Saddle

## 1.5 Base

Nominal Size	Inch Diameter <b>A</b>	PE Pipe O.D. <b>B</b>	Radius Cut <b>R</b>
0.5 NPT	0.84	1.900	2.375 to 42
0.75 NPT	1.05	1.900	2.375 to 42
0.75 CC	1.145	1.900	2.375 to 42



Certified to  
NSF/ANSI 61