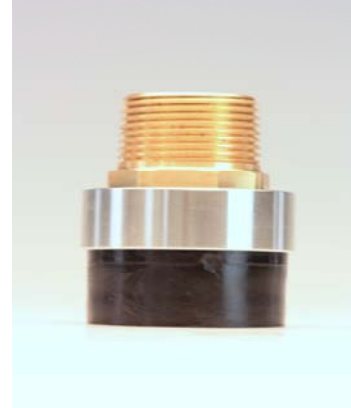
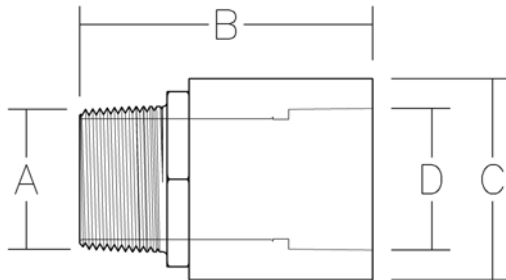




The Ultimate Joining System

# Series 723

## Socket Transition with Male NPT



Nominal Size Inches	POLY-CAM Thread Material	Coupling NPT	Coupling Length	Coupling Diameter	HDPE Socket Diameter
		<i>A</i>	<i>B</i>	<i>C</i>	<i>D</i>
3/4	304, Stainless Steel C954 Bronze	1.050	2.450	1.430	1.050
1	304, Stainless Steel C954 Bronze	1.315	2.665	1.800	1.315
1 1/4	304, Stainless Steel C954 Bronze	1.660	3.350	2.300	1.660
1 1/2	304, Stainless Steel C954 Bronze	1.900	3.750	2.610	1.900
2	304, Stainless Steel C954 Bronze	2.375	3.750	3.250	2.375

Fully pressure rated . . . ASTM BD2638 ANSI/ASME B1.20-1983 R 1992  
 Manufactured to ASTM D2513 Cat. 3 D1599, D1598, F-714, ASTM D3350

**Poly-Cam, Inc. - 1101 McKinley Street - Anoka, MN 55303 888/355 5574 -  
 Fax 763/786 2167 - www.poly-cam.com**