



**1101 McKinley Street  
Anoka, MN 55303  
Phone (763) 786-6682  
Fax (763) 786-2167**

## **Design**

The POLY-CAM Steel Pulling heads are a single eye construction rated to the safe pulling strength of the pipe installed. The design of the Pulling Heads allow them to be fully pressure rated and sealed not to allow drilling fluids and other contaminants. In addition Poly-Cam offers a female threaded port for ease of pressing the line after the pull.

The POLY-CAM Threaded Transition Adaptors is a multi-level mechanical transition fitting, protected under patent number 5,211,429, which is hydraulically compressed unto the polyethylene or pipe quality copolymer material.

For Further information please contact your Poly-cam Distributor or Representative.

## **Features**

Size range from 1"- 30" diameter  
DIPS and IPS Sizes  
Optional female threaded port for testing (up charge)  
Round Nose design for easy of pulling  
Strong Steel construction for longevity  
Pressure sealed design

## **System Performance**

The transition fitting is designed to handle full pressure with a 2:1 safety factor at 73.40 degrees Fahrenheit with a minimum 50 year design life.

## **Quality Assurance**

The transition fitting shall be manufactured by Poly-Cam, Inc. Poly-Cam, Inc. shall provide quality assurance with regards to proper installation, compatibility, performance, and acceptance. Transition joint meets or exceeds the requirements of ASTM D2513 Category 1.

## **Installation**

### **HDPE pipe end**

Install transition fitting so as to comply with the pipe manufacturer's recommended procedures. All field welds shall be accomplished in accordance with Plastic Pipe Institute's welding procedure for butt fusion.

## **Material**

The POLY-CAM Threaded Transition is manufactured of A53B grade Carbon Steel and incorporated with the transition manufactured of HDPE (cell class 345454c) or pipe quality Copolymer material. All certification will be submitted upon request.

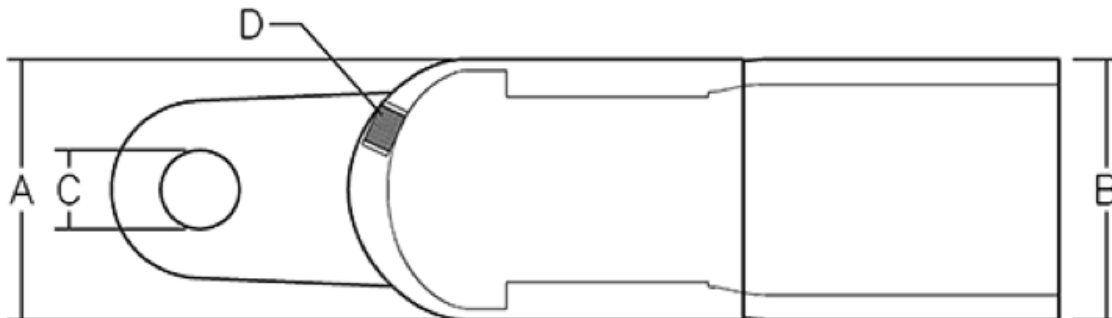
# POLY-CAM®

1101 McKinley Street  
 Anoka, MN 55303  
 Phone (763) 786-6682  
 Fax (763) 786-2167

## Series 650 The POLY-CAM Pulling Head



Nominal Size Inches	Pulling Head O.D. "A"	IPS DR11 HDPE O.D. "B"	Eye Diameter "C"	Optional Threaded Port NPT "D"	Eye Plate Thickness
0.75	1.24	1.05	0.44		0.42
1	1.45	1.315	0.44		0.42
1.25	1.74	1.66	0.5		0.47
1.5	2	1.9	0.5		0.47
2	2.375	2.375	1.1875	0.375	0.825
3	3.5	3.5	1.25	0.5	0.75
4	4.5	4.5	1.5	0.75	1
5	5.563	5.563	1.5	0.75	1
6	6.625	6.625	2	0.75	1.25
8	8.625	8.625	2	1	1.5
10	10.75	10.75	2	1.5	1.5
12	12.75	12.75	2	1.5	1.5
14	14	14	2	2	1.5
16	16	16	2	2	1.5
18	18	18	3	2	1.5
20	20	20	3	2	2
24	24	24	3.25	2	2
30	30	30	4	2	3



Rated at SDR11 • Heavy Duty Construction  
 ATSM 489, ANSI/ASME B18.15  
 11/00 © Registered Trademark Poly-Cam, Inc. - US Patent # 5,211,429